

## Model 9300 Submersible

### Applications:

- Irrigation
- Livestock Watering
- Remote Homes & Cabins

The 9300 Series Pumps are backed by 25 years of research and engineering experience. Designed to be strong and yet lightweight these pump are easily repaired in the field. Kelln's provide a wide range of parts and kits for ease of rebuilding and repair.

### "Gland" Connector Features:

- Waterblocked Electrical Connector.
- Impervious gland connection design prevents waterwicking.
- Quick Disconnect – No Splicing necessary.
- Accepts a variety of jacketed cables.

### Typical System Situation

- Well / 50 Foot Lift, 50 Cow/Calf Pairs
- 6" Inch Well Casing, 3 GPM Recovery

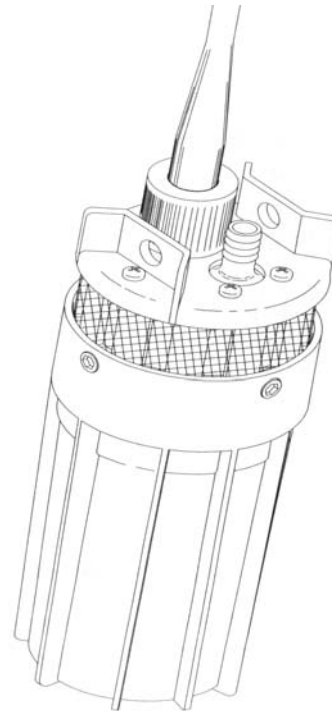
Items included in system price

- 1 - Model 9300 Submersible Pump
- 2 - 64 Watt Uni-Solar Shatterproof panels
- 1 - Double Panel Stand
- 1 - Regulator & Low Volt Disconnect
- 1 - Float Switch ( 30 Ft. Relay Operated )
- 1 - 40 Ft. Pump Cable
- 1 - Wire Package ( Plug in Ready )
- 100 - Lin. Ft. ½ inch Poly Hose

Required but Not Included

2 - Group 27 - 75 Amp/Hour Battery

**System Cost \$ 2959.00**



**The 9300 Series Solar – Powered submersible**

**Pumps are Rugged, Durable...And Built to Last**

### **9300 Series Pump Features**

- Strong Construction, yet lightweight (6 lbs.)
- Corrosion – proof housing with stainless-steel fasteners.
- Dry Running capability with out pump damage.
- Internal bypass Feature for pump protection.
- Long life, 24 VDC Operation.
- Easily repaired in field.
- 25 years of manufacturing experience with diaphragm pumps.
- State of the art solid diaphragm

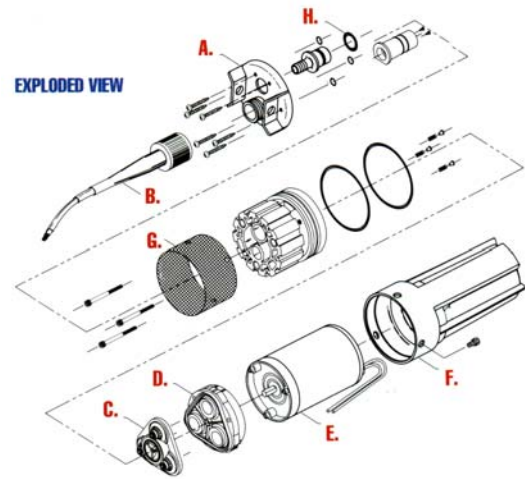
## Model 9300 Series

24 VDC 9300 Submersible Pump Flow Chart

Produces 330-1170 Gallons (1249 – 4428 Litres) Per Day					
Total Vertical Lift		Flow Rate Per Hour		Solar Array Size Minimum Total Power Rating	Current Amps
Feet	Meters	GAL	LTR	Watts	
20	6.1	117	443	58	1.5
40	12.2	114	432	65	1.7
60	18.3	109	413	78	2.1
80	24.3	106	401	89	2.4
100	30.5	103	390	99	2.6
120	36.6	101	382	104	2.8
140	42.7	99	375	115	3.1
160	48.8	98	371	123	3.3
180	54.9	93	352	135	3.6
200	61	91	345	141	3.8
230	70.1	82	310	155	4.1

Note: Use of an LCB (Linear Current Booster) Unit is required for optimum performance

Minimum total power rating shows minimum array watts to perform as shown.



**Replacement Part Kits**

- (A) Lift Plate
- (B) Cable Plug Kit
- (C) Valve Kit
- (D) Lower Housing Assembly Kit
- (E) Motor Kit
- (F) Canister Kit
- (G) Filter Screen Kit
- (I) Tool Kit (not shown)

**TECHNICAL SPECIFICATIONS:**

Model Number	935-043-101
Pump Design	Positive Displacement 3 Chamber Diaphragm Pump
Cam	3.0 Degree
Motor	Permanent Magnet Thermally Protected
Voltage	24 VDC Nominal
Amps	4.0 Maximum
Internal Bypass	105 – 110 PSI Max. (7.2 – 7.5 Bars)
Maximum Lift	230 Feet Maximum (70 Meters)
Maximum Submersion	100 Feet Maximum (30 Meters)
Outlet Port	½" (12.7mm) Barbed Fitting for ½" (12.7mI.D.Tubing)
Inlet	50 Meshes Stainless
Materials	High Strength Plastics
Typical Applications	Well Pump
Net Weight	6 LBS. (2.7Kgs.)

